

## MODEL 12300

## COBRA™

### Surface Mount Traffic Spikes

*THE ONLY CHOICE...For your traffic control needs.*



- *STANDARD*
- *INSTALL ON  
ASHPALT OR  
CONCRETE*

*3' (914 mm) Sections  
114 lbs.*

#### LOAD RATED

5 Tons or 10,000 lbs.  
Per Single Axle Load

#### MODELS

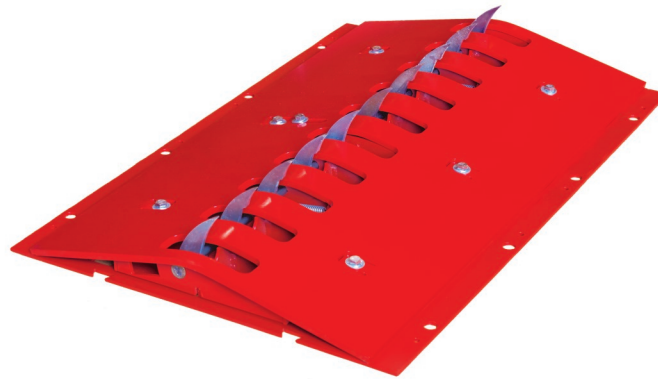
12300.100 Safety Red  
12300.120 Galvanized  
12300.130 Powder Coated

#### System Requirements

- Maximum Speed 5 mph
- Tires must pass over the unit so that the tire is parallel to the teeth and not at an angle
- Warning Signs Required
- Locating & installing a Traffic Spike incorrectly or not using warning signs voids any warranty

**1 Year Limited Warranty**

- **Unrestricted Traffic in Free Direction**
- **Discourages Wrong Way Traffic**
- **Surface Mount—Provides a Speed Bump**



Guardian's COBRA™ Traffic Spike System is designed and engineered to allow traffic to proceed freely in one direction only.

The COBRA™ System's main function is to prevent vehicles from proceeding through controlled entry locations by puncturing tires while allowing unrestricted passage from vehicles traveling in the allowable direction.

The COBRA™ Traffic Spike System provides extremely effective and economical one-way directional, unmanned traffic control. The COBRA™ product is manually activated and engineered with spring loaded teeth along with a counter-balanced technology that provide a reliable and low maintenance operation.

*GUARDIAN reserves the right to make changes to specifications at any time*

*"TOP DOWN DESIGN" for Easy Maintenance*

## MODEL 12300

## COBRA™

## Surface Mount

## Traffic Spikes

### Specifications

1/4" Hot Rolled Steel Top Plate

Curved Tooth, Fishhook  
Disabler

Durable Stainless Steel Springs

Heavy Duty Steel Construction

Positive Stop Eliminates Wear

Specially Engineered Teeth

Built-In Latch Down Device

Built-In Sound Dampeners

### Installation

Epoxy—14250.100

3/8" LDT Lag Bolts

*\*Bolts not to be used on  
Asphalt Surface*

### Available Options

Safety Red or Yellow

Galvanized or Powder Coated

### Warning Signs

Reflective

Lighted

Solar

English or Spanish



## Features and Benefits

*Virtually Maintenance Free*

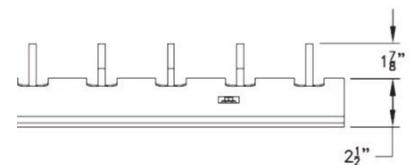
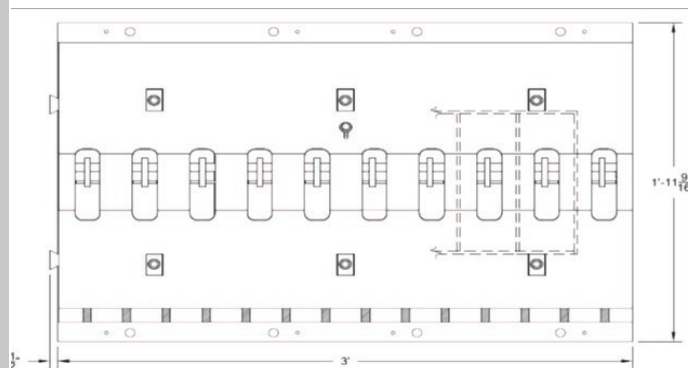
*Trouble Free Operation*

*Durable Spring Loaded Teeth and  
Counter Balanced Back-Up*

*Corrosion Prevention*

*Modular Style Provided Design Flexibility*

*Eliminates Tire Damage in Unrestricted  
Direction*



## Unparalleled Features in the Industry

- *Top Plate Mounted Components*
- *Durable Stainless Steel Springs*
- *Heavy Duty Steel Construction*
- *Reliable Zinc Plated Moving Parts*
- *Positive Stop Eliminates Wear*
- *Specially Engineered Teeth*
- *Built-In Latch Down Device*

## Optional End Bevels

**(Sold in Pairs)  
12300.190**



DISTRIBUTED BY:



Christine Richards  
(520)780-9751